



Upper Swaines, Epping

O.I.E.O £695,000

 4  1  2  D

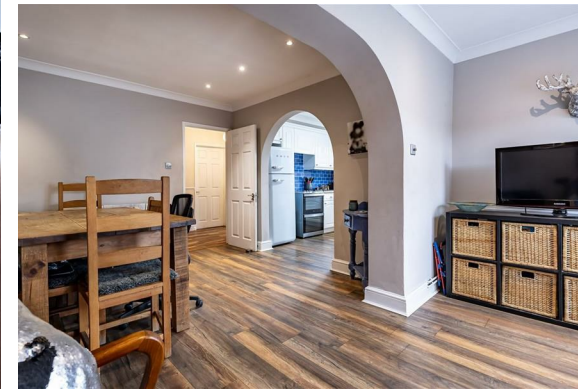
MILLERS
ESTATE AGENTS

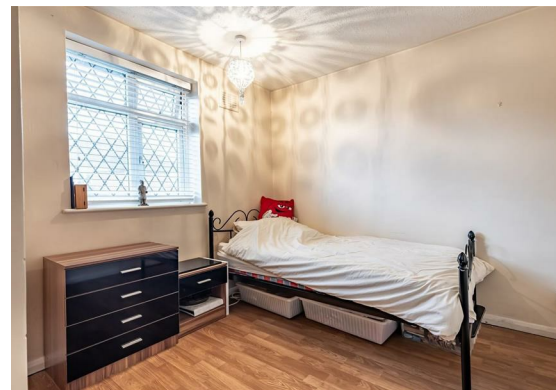
Situated on the highly sought-after residential street of Upper Swaines in Epping, this stunning extended, end terraced family home beautifully combines space, comfort & convenience. Spanning an impressive 1,346.1 square feet, the property showcases three inviting reception areas & four generously sized bedrooms, making it an ideal retreat for families in search of style & practicality.

Step inside & you are welcomed by a gracious hallway that opens into the front living room, adorned with a charming fireplace, which offers a warm & inviting atmosphere, perfect for cozy evenings. The open-plan kitchen & dining area, complemented by a snug, create an exceptional space for entertaining, featuring a set of double doors that invite you to the rear garden, seamlessly blending indoor & outdoor living. A functional utility room and a separate storage room, providing added convenience. On the first floor, a generous landing leads to four well-proportioned double bedrooms, bathed in natural light & a family bathroom finished with a sleek white three-piece suite.

The exterior of the property is equally captivating, featuring a front garden that leads to the entrance, along with gates that provide off-street parking for two or three vehicles. The expansive rear garden, measuring over 50' x 40', is a true gem, boasting a shaded patio area perfect for al fresco dining & entertaining, with steps leading up to a low-maintenance lawn that offers a serene retreat for family gatherings. Additionally, a detached garage presents versatile options for storage or could be transformed into an inspiring home office.

This exceptional residence is just a short stroll from Epping's vibrant High Street, where an array of boutiques, cafes & amenities await your exploration. This property represents a wonderful opportunity for those looking to settle into a charming community while enjoying the comforts & spaciousness of a family home, with easy access to the Epping Central Line Station.





GROUND FLOOR

Porch

2'7" x 5'1" (0.79m x 1.55m)

Living Room

17'7" x 10'11" (5.35m x 3.33m)

Storage Area

5'1" x 5'5" (1.55m x 1.65m)

Utility Room

5'5" x 10'10" (1.65m x 3.30m)

Dining Room

11'1" x 9'7" (3.38m x 2.92m)

Snug

12'4" x 5'9" (3.75m x 1.75m)

Kitchen

8'4" x 9'7" (2.55m x 2.92m)

Cloakroom

5'11" x 2'7" (1.80m x 0.79m)

FIRST FLOOR

Bedroom One

11'8" x 10'11" (3.56m x 3.34m)

Bedroom Two

11'2" x 9'8" (3.40m x 2.95m)

Bedroom Three

8'3" x 8'11" (2.51m x 2.72m)

Bedroom Four

8'7" x 7'10" (2.62m x 2.40m)

Bathroom

7'11" x 5'5" (2.41m x 1.65m)

EXTERNAL AREA

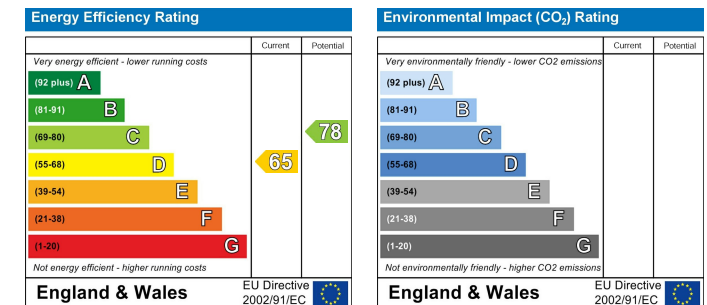
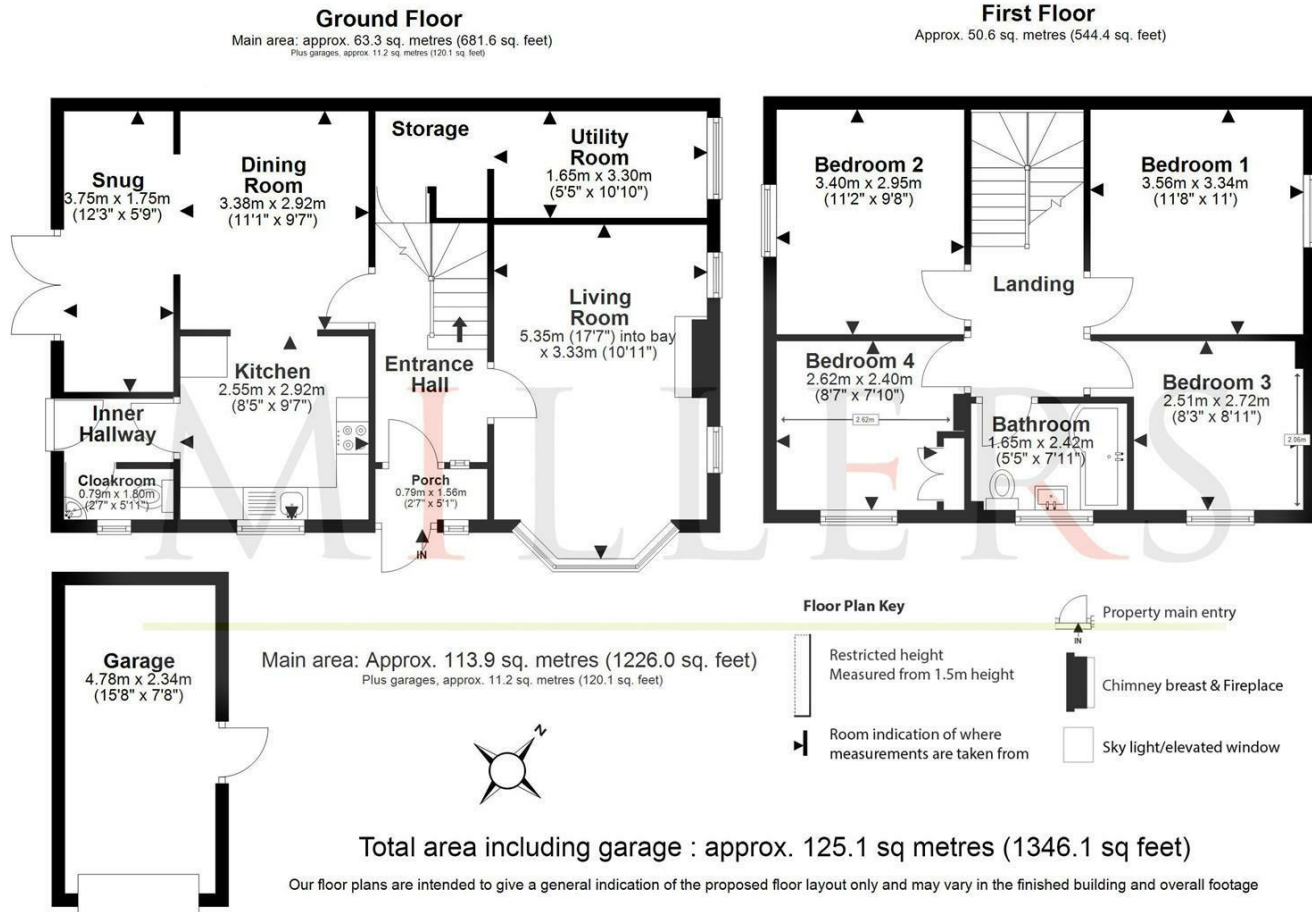
Detached Garage

15'8" x 7'8" (4.78m x 2.34m)

Rear Garden (max)

50' x 40'9" (15.24m x 12.42m)





Viewing

Please contact our Millers Office on 01992 560555 if you wish to arrange a viewing appointment for this property or require further information.

These particulars, whilst believed to be accurate are set out as a general outline only for guidance and do not constitute any part of an offer or contract. Intending purchasers should not rely on them as statements of representation of fact, but must satisfy themselves by inspection or otherwise as to their accuracy. No person in this firm's employment has the authority to make or give any representation or warranty in respect of the property.